

Electric Ear Cleaning Kit Manual

Before use, please read this instruction manual carefully and completely, and keep it for future reference!

Precautions

Please read all instructions, warnings and tips carefully before use. Improper use may cause serious personal injury and property damage.

1. Do not put corrosive liquids into the product to avoid damage to the human body and the product.
2. It is normal to feel pressure but no pain. If you feel pain, please stop using this product immediately and consult your doctor for professional help.
3. Children or people with disabilities should use this product under the supervision of an adult or guardian.

4. This product is not a toy. Please keep it out of reach of children.

5. This product is equipped with a battery. Please keep it away from fire, moisture and high temperature. It may explode due to overheating.

6. If you do not use this product, please store it in a dry place.

7. Make sure to connect a suitable power supply DC5V to charge the product.

8. Do not use solutions below body temperature to avoid discomfort. It is recommended to use warm water (not too hot to avoid burns).

9. Do not change or modify the product, or disassemble the internal equipment, otherwise it may damage the product or cause personal injury.

10. Do not classify it as household waste. When you no longer need this product, please use your local government's recycling process and take it to a local electrical equipment recycling station.

Warm Tips: All pictures in the manual are for reference only. Due to product updates or upgrades, there may be differences between the actual product and the picture, please refer to the actual product.

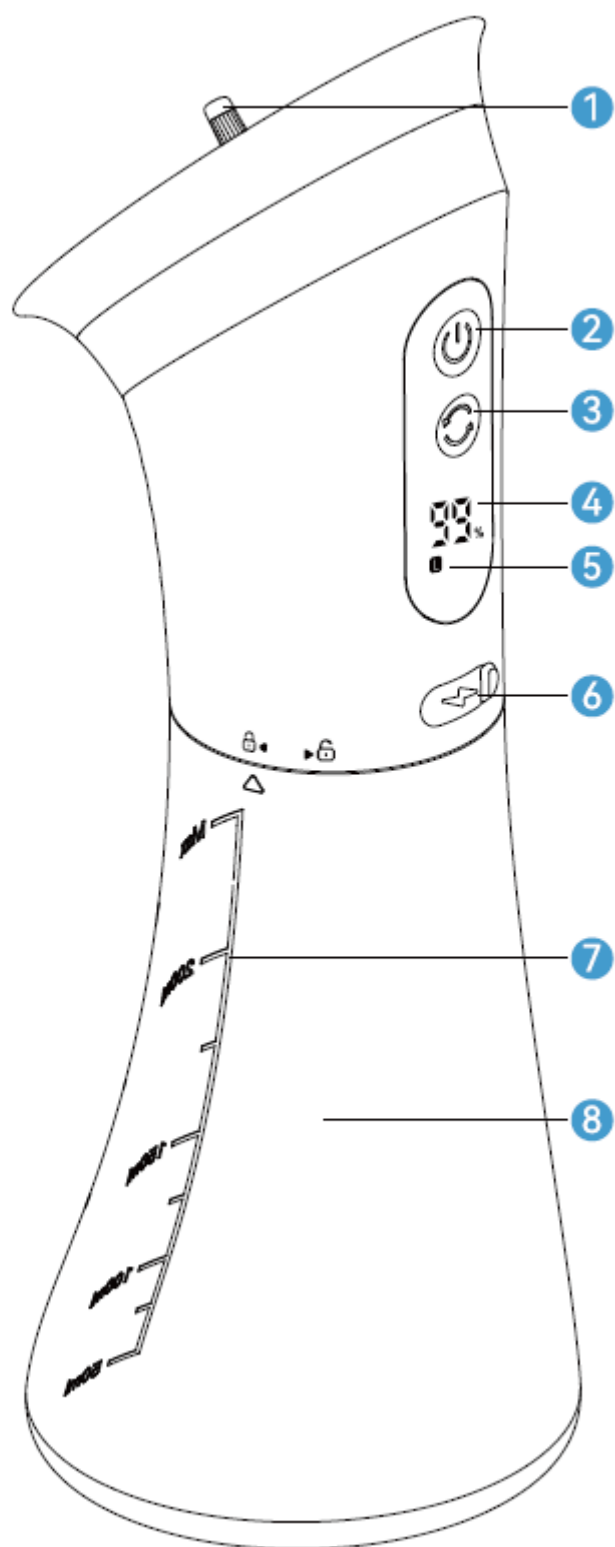
Troubleshooting

1. If the product cannot be turned on, please charge it to prevent low battery.

2. If the product has a short working time after being fully charged, please charge and use it in an ambient temperature between 15 - 35°C; or if the charging time is insufficient, please charge it.

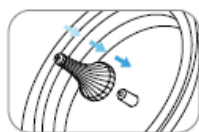
3. If the LED light does not light up when charging, please check whether the power supply is connected correctly.

4. If the water pressure is too low, please replace the earplugs with new ones to prevent blockage or damage, or select a stronger mode as needed.



Product Introduction

1. Nozzle



2. Multi - function on/off button



3. Power mode button



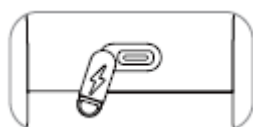
4. Battery display



5. Power mode display



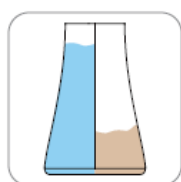
6. Type - C charging port



7. Water level scale



8. Dual water tank



Function Introduction

1. Nozzle

Equipped with 1 - hole, 3 - hole, and 5 - hole nozzles, different nozzles can be replaced according to actual needs. The more nozzle holes, the smaller the spray force.

2. Multi - function on/off button

Press for 1 second to turn on the product, press for 1 second to turn off the product, and short press to start/pause the product.

3. Power switch button

Short press to cycle through different power modes to work at different powers.

4. Battery display screen

The battery percentage is displayed in real time during charging and normal use.

5. Power setting display screen

L Low

P Pulse

H High

6. Type-C charging port

Please use a 5V1A charger and a Type-C charging cable to charge the product. After charging, the USB plug must be installed to prevent liquid from entering and damaging the product.

7. Water level scale

Pour the liquid into the water tank according to the actual required liquid volume and the reference scale.

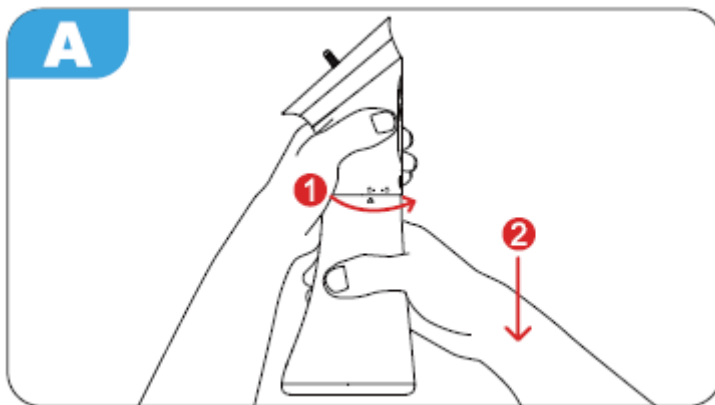
8. Dual - use water tank

The liquid in the water tank can be isolated and stored separately. After the clean liquid flushes the ear canal, the other half of the water tank can be stored.

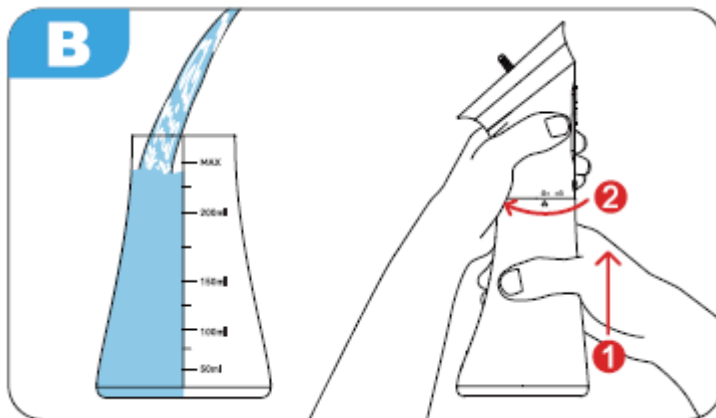
Precautions

Before using the device for the first time, rinse the water tank and allow it to air dry. Charge the device using the USB - C cable.

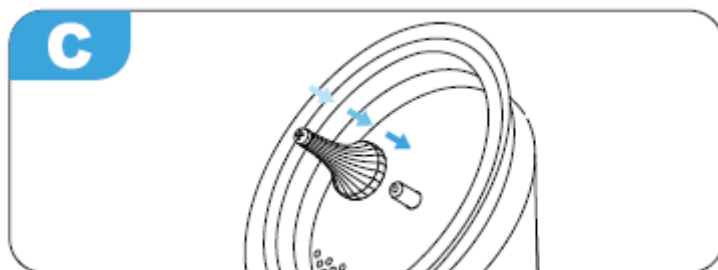
1. Hold the main unit with one hand and the water tank with the other hand, rotate the water tank and pull it down to remove it. The kettle is divided into two liquid storage compartments on the left and right sides. (Picture A)



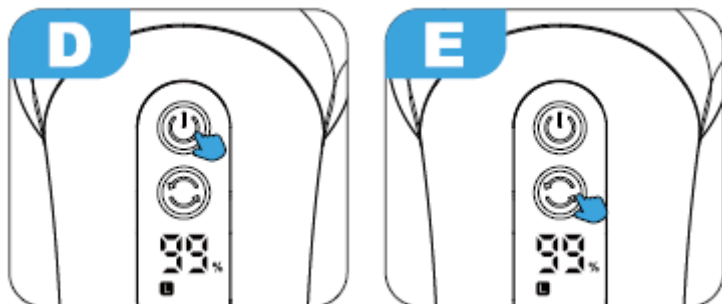
2. Add the liquid required, and refer to the scale mark on the body for the actual capacity of the liquid storage tank. After filling the liquid, hold the main unit with one hand and the water tank with the other hand to push it up and rotate it to assemble it to the whole machine. (Picture B)



3. You can choose 1 - hole, 3 - hole, or 5 - hole nozzles to insert into the machine's water outlet. For the first use, it is recommended to choose the 5 - hole nozzle to get used to the spray intensity. (Picture C)



4. Long press the on/off button, the device turns on, the LED light shows the power level, the corresponding impact light flashes, and the function is paused. (Picture D)



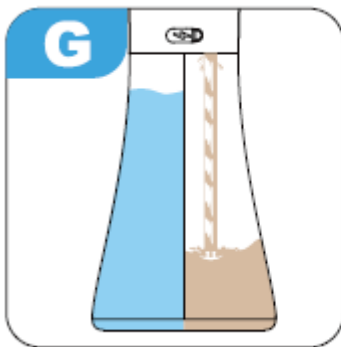
5. Set the pressure, short press the pressure switch button, and select the appropriate force. There are 3 modes to choose from: low pressure level, pulse level, and high pressure level (it is recommended to start with low pressure impact for the first use). (Picture E)

6. After the device function is adjusted, gently insert the machine nozzle into the ear canal to the appropriate depth, press the on/off button to start the ear cleaner.



7. When washing the right ear, tilt your head to the right so that water and earwax will flow out. When washing the left ear, tilt your head to the left so that water and earwax will flow out. (Picture F)

8. When flushing, the out flowing liquid can automatically flow into the liquid storage tank of the machine, and no separate water basin is needed to collect it. (Picture G)



9. After use, turn off the device and empty the remaining liquid in the water tank and the machine to keep the device dry. (Picture H)

Cleaning and maintenance

1. Turn off and unplug the device before cleaning.

1□. Open the water inlet, hold the main body of the device with your right hand, and pull out the water tank with your left hand. (Figure I)

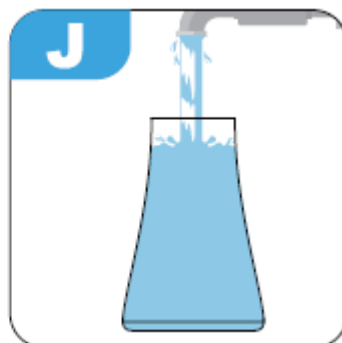
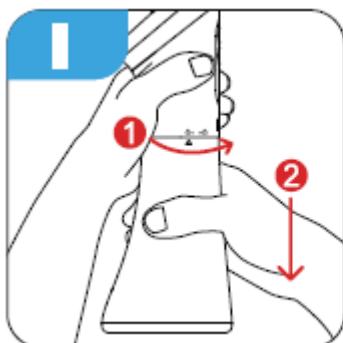
2□. Take out the water tank, rinse the inside and outside of the water tank with water, and then let it air dry. (Figure J)

2. Replacement

After the nozzle has been used for 90 days, it needs to be replaced with a new one.

3. Storage

Wipe the device with a clean damp cloth. Make sure the device is dry before storing in a cool and dry place.



WARNING!

1. Avoid submerging the device in water to prevent damage.
2. Avoid using harsh chemicals. Use dish washing liquid or warm water for cleaning rather than harsh chemicals or solvents.

Environmental Protection

1. Proper disposal: When disposing of the flusher or its components, follow local e - waste regulations and guidelines and avoid disposing of it with normal household waste.
2. Battery recycling: Recycle rechargeable batteries properly. Check local facilities or collection points for battery recycling.
3. Energy efficiency: Save energy by turning off the flusher when not in use and unplugging the charger when the battery is fully charged.

Charging Instructions

Please use the Type - C charging cable that comes with the product to charge your device.

1. Turn off the device before charging and make sure it is not in use.
2. Keep the device and charger away from water to prevent any electrical hazards.
3. The LCD display has a built - in power display for easy viewing of the power level.
4. After fully charged, disconnect the device from the charger.

SKU: earpure_BL110

Product name: Electric ear cleaning kit

Reference no.: 7/2026

Model no: E80

Input: Type C DC 5V/1A

Power: 1,55W

Battery capacity: 2000 mAh

Charging time: 3 hours

Water tank capacity: 230 ml

Manufacturer: Shenzhen Sulang Technology Co.,Ltd.

Room C, 18thFloor, Building 12, Lehui Science and Innovation Center, No. 489 Jihua Road, Bantian Street, Longgang District, Shenzhen, Guangdong Province

Importer & Authorised representative: DFVU d.o.o., Liparjeva cesta 6A, 1234 Mengeš, Slovenia

Made in China

WARNING! Read instructions carefully before use. Improper use may result in serious injury!

Mild pressure may be felt during use, but pain should not occur.

If you experience any pain or discomfort, stop using the product immediately and consult a healthcare professional.





**UK
CA**

