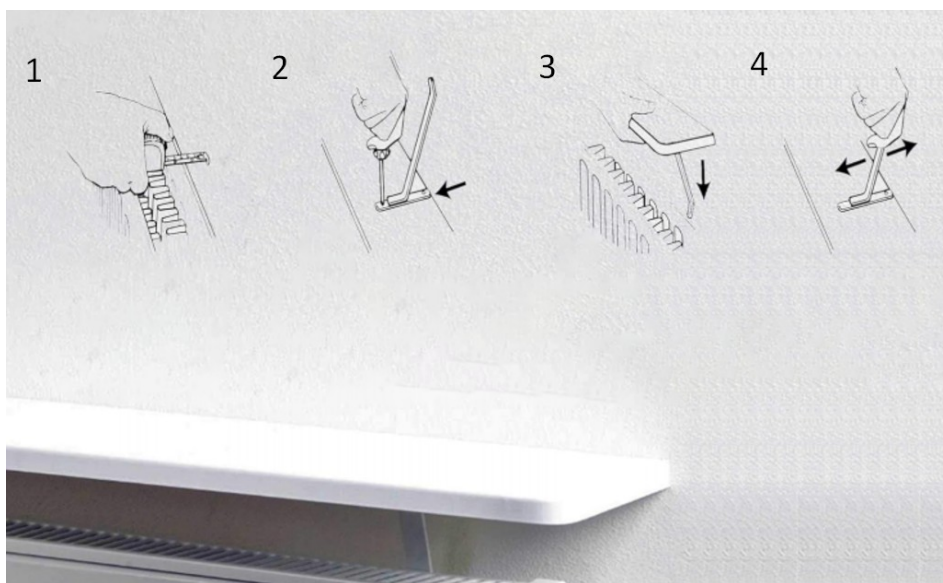


## Floating Radiator Shelf Manual

### 4 EASY STEPS:

1. Measure the gap between the wall and the radiator, suitable for 30-50mm.
2. Screw the bracket into the pre-drilled holes.
3. Slot the shelf behind the radiator and ensure it is securely fastened.
4. If shelf doesn't sit level, adjust bracket backwards or forwards to ensure it sits level.



SKU: radifloat\_WH160 / radifloat\_WH100 / radifloat\_LAR160 / radifloat\_LAR100

Product name: Floating Radiator Shelf Model No.: MDK-15

Color: brown / white

Size: 60\*15\*1.5 cm / 100\*15\*1.5 cm

Date of manufacture: 7 / 2025

Importer & Authorised representative: DFVU d.o.o., Liparjeva cesta 6A, 1234 Mengeš, Slovenia.

MADE IN P.R.C

**WARNING!** Load limit: Maximum of 5-10 kg evenly spread.

**WARNING!** No climbing: Never sit, stand, or lean on the shelf.

**WARNING!** Keep screws and brackets out of children's reach during installation.

**WARNING!** Prevent children from pulling on or hanging from the shelf.

**WARNING!** Stability check: Periodically ensure the shelf remains firmly seated.

**WARNING!** Radiator heat: Installation should be done when the radiator is cool to the touch.

